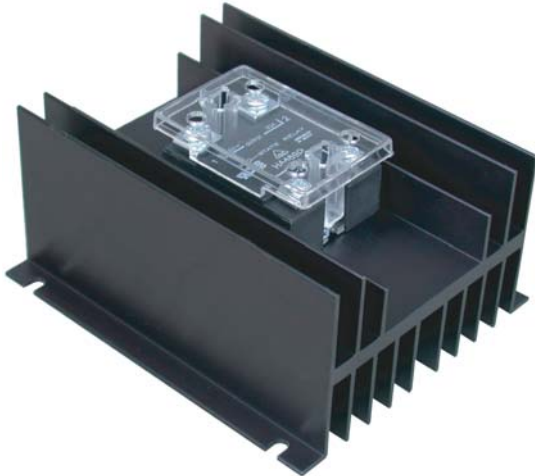




Power Controller to 80A N Series



FEATURES:

- Solid State Relay Assemblies rated to 80A/pole @ 40° C (100% duty cycle)
- Available in 1 & 2 pole configurations
- Relays approved to the following: UL, CSA, VDE and CE
- Zero cross switching standard
- Finger safe cover standard

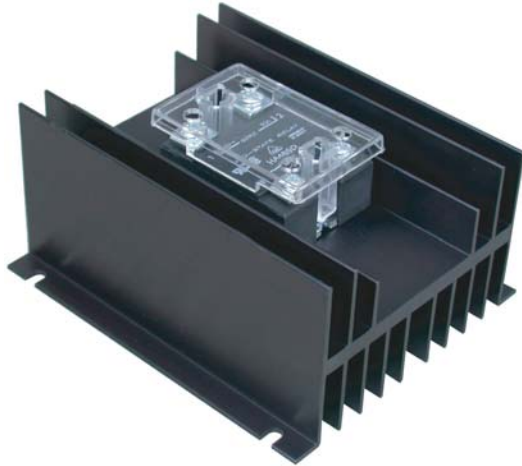
OUTPUT SPECIFICATIONS	AC Control			
	HBC-50AN	HBC-50HAN	HBC-90HAN	HBC-125HAN
Operating Voltage (47-63 Hz) [Vrms]	24-280	48-530	48-530	48-530
Load Current Range [Arms]	.04-45	.04-45	.04-70	.04-80
Transient Overvoltage [Vpk]	600	1200	1200	1200
Max. Surge Current, (16.6ms) [Apk]	625	625	1200	1750
Max. On-State Voltage Drop [Vpk]	1.6	1.7	1.7	1.7
Max. Turn-on Time	10.0mS	10.0mS	10.0mS	10.0mS
Max. Turn-off Time	40.0mS	40.0mS	40.0mS	40.0mS
Max. I ² t for fusing (8.3mS) [A ² sec]	1620	1620	6000	12,700
Max. Off-State Leakage Current [mArms]	10	10	10	10
Power Factor (Min.) with Max. Load	0.5	0.5	0.5	0.5
INPUT SPECIFICATIONS				
Control Voltage Range [Vrms]	90-280	90-280	90-280	90-280
Max. Turn-on Voltage [Vrms]	90	90	90	90
Min. Turn-off Voltage [Vrms]	10	10	10	10
Nominal Input Impedance [Ohms]	60K	60K	60K	60K
Typical Input Current	2mA @ 120Vrms, 4mA @ 240Vrms			

OPTIONS:

- 2 3 Phase / 2 Pole configuration
- D DIN Mount
- 10 Random turn-on
- E 24VAC Control
- M MOV - External transient voltage suppression
- P Internal transient voltage suppression
- F Fast-on terminals



Power Controller to 80A N Series



FEATURES:

- Solid State Relay Assemblies rated to 80A/pole @ 40° C (100% duty cycle)
- Available in 1 & 2 pole configurations
- Relays approved to the following: UL, CSA, VDE and CE
- Zero cross switching standard
- Finger safe cover standard
- Phase angle & time proportioning control optional

OUTPUT SPECIFICATIONS	DC Control			
	HBC-50DN	HBC-50HDN	HBC-90HDN	HBC-125HDN
Operating Voltage (47-63 Hz) [Vrms]	24-280	48-530	48-530	48-530
Load Current Range [Arms]	.04-45	.04-45	.04-70	.04-80
Transient Overvoltage [Vpk]	600	1200	1200	1200
Max. Surge Current, (16.6ms) [Apk]	625	625	1200	1750
Max. On-State Voltage Drop [Vpk]	1.6	1.7	1.7	1.7
Max. Turn-on and Turn-off Time	1/2 cycle	1/2 cycle	1/2 cycle	1/2 cycle
Max. I ² t for fusing (8.3mS) [A ² sec]	1620	1620	6000	12,700
Max. Off-State Leakage Current [mArms]	10	10	10	10
Power Factor (Min.) with Max. Load	0.5	0.5	0.5	0.5
INPUT SPECIFICATIONS				
Control Voltage Range [Vdc]	3-32	3-32	3-32	3-32
Max. Turn-on Voltage [Vdc]	3.0	3.0	3.0	3.0
Min. Turn-off Voltage [Vdc]	1.0	1.0	1.0	1.0
Nominal Input Impedance [Ohms]	1500 Ohms	See Note *	See Note *	1500 **
Typical Input Current	3.4mA @ 5Vdc, 20mA @ 28Vdc	2.0 mA *	2.0 mA *	3.4mA @ 5Vdc, 20mA @ 28Vdc **

*Input circuitry incorporates active current limiter

** Input circuitry for 480V models incorporates active current limiter with 2mA typical input current.

INPUT OPTIONS

Change HBC Prefix To:

(Ex: HBC-90HDN = LPC-90HDN)

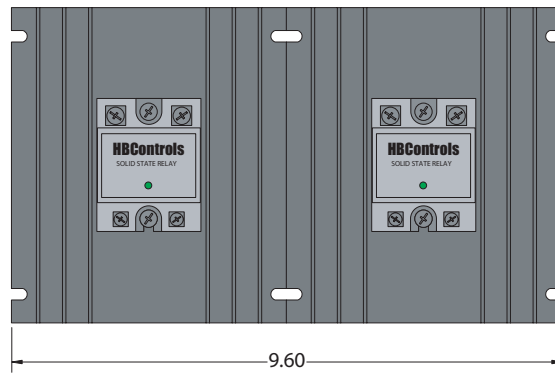
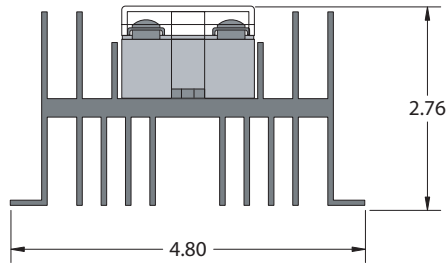
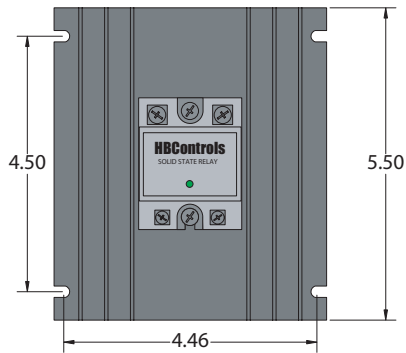
- TP Time proportioning controller (Burst Fire)
Input: 0-10VDC, 0-5VDC, 2-10VDC, 1-5VDC, 4-20mA, 0-20mA, Potentiometer, 0-135Ω (TP135 prefix)
(24VAC Power Supply Required)
- TPLP Loop powered time proportioning controller (Burst Fire)
Input: 4-20mA
- LPC Linear phase angle controller
Input: 0-10VDC, 0-5VDC, 2-10VDC, 1-5VDC, 4-20mA, 0-20mA, Potentiometer, 0-135Ω (TP135 prefix)
(24VAC Power Supply Required)

OPTIONS:

- 2 3 Phase / 2 Pole configuration
- D DIN Mount
- 10 Random turn-on
- Z LED input status indicator (DC input only)
- M MOV - External transient voltage suppression
- P Internal transient voltage suppression
- F Fast-on terminals

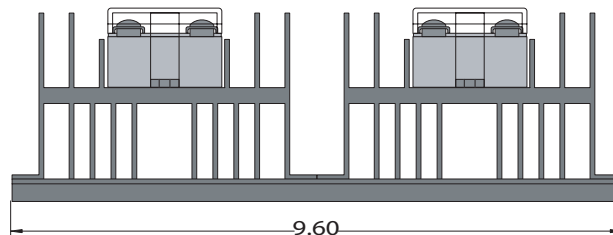
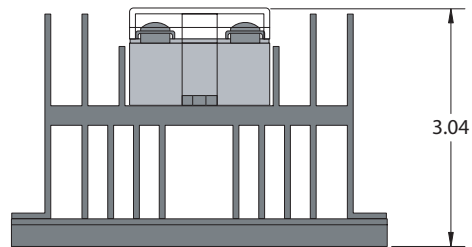
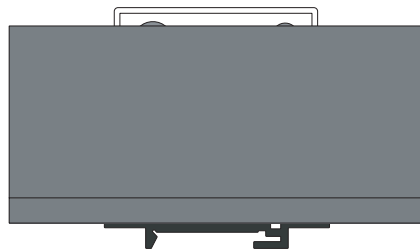
Also Available: Relay Monitoring Boards (See MB Spec Sheets)

Power Controller to 80A N Series



**3 Phase /
2 Pole
(-2 Option)**

**DIN Mount
(-D Option)**



**3 Phase /
2 Pole
(-2 Option)**